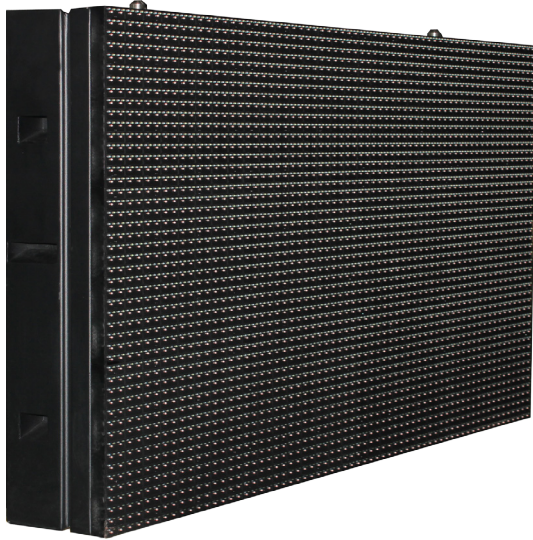


# DH-PHTA31.25

## Traffic Guidance LED



### Technical Specification

#### Model

Model	DH-PHTA31.25
-------	--------------

#### Parameters

Pixel Pitch	31.25mm
Pixel Composition	4R2G2B, 4R2G
LED Type	Ø5 perfect circle and high brightness
Brightness	7000-12000 cd/m <sup>2</sup>
Brightness Adjustment	100 level adjustable (via software)
Color Temperature	6500K
Viewing Angle	H120°, V90°
Pixel Density	1024 pixels/m <sup>2</sup>
Recommend View Distance	30M
Module Dimensions	250mm×250mm
Cabinet Dimensions	W1000mm×H1000mm×D200mm(customizable)
Weight	60 kg/m <sup>2</sup>
Area	1 m <sup>2</sup>
Cabinet Material	Iron/Aluminum

### Features:

- The display module is general and can be exchanged. You can build any size and display any color as you want.
- Double housing structure, forms the internal natural convection patten to keep the temperature balance.
- The joint between module and cabinet adopt O-shaped seal ring, keep good moisture proof to prevent leakage performance.
- Module encapsulations adopt advanced soft silica gel, and get good elasticity and anti-aging ability.
- Adopt cooling fin for power and other important IC device, avoid the fan fault to make screen down.
- Choose device of wide temperature range, guarantee the normal daily work of the screen under the environment of high and low temperatures.
- Adopt industrial processor in control system and get higher reliability.
- Adopting mature large-scale integrated high-speed network serial transmission instead of discrete parallel transmission chip, reduce the complexity of display transmission, reduces the complexity of the control system, improve the stability of the product.
- Adopt net cable to transmit data, reduced the screen internal transmission cables, greatly improve the stability of the screen.
- Adopt generic network data transmission technology, improve variable message sign displayed speed.



Protection Grade	IP65
Temperature	Running: -20 °C~50 °C, Store: -40 °C~55 °C
Cabinet Resolution	32×32 dots
Color Depth	16 bits
Gray Level	65536 levels per color
Color	4R2G2B: 16777216, 4R2G: 65536
Contrast	3000:1
Video Frame Rate	50/60 Hz

Rate Refresh	≥3000 Hz
Input Voltage	110V±10% or 220V±10%
Input Power Frequency	50~60 Hz
Input Power (max)	800 W/m <sup>2</sup>
Input Power (typical)	300 W/m <sup>2</sup>
Lifespan	≥50,000 h
Driving Mode	Static real pixel
Display Smoothness	The seam between two module<1mm
Uniformity	Uniform pixel intensity and module brightness
Protective Circuit	Dynamic scan mode
Power Switch	Auto switch (MV-UL power), Switching Power Supply Load: 5V/40A 5V/60A
Data interconnection	CAT5 Cable ( L≤120m ), multi-mode fiber ( L≤500m , single mode fiber ( L≤20km )